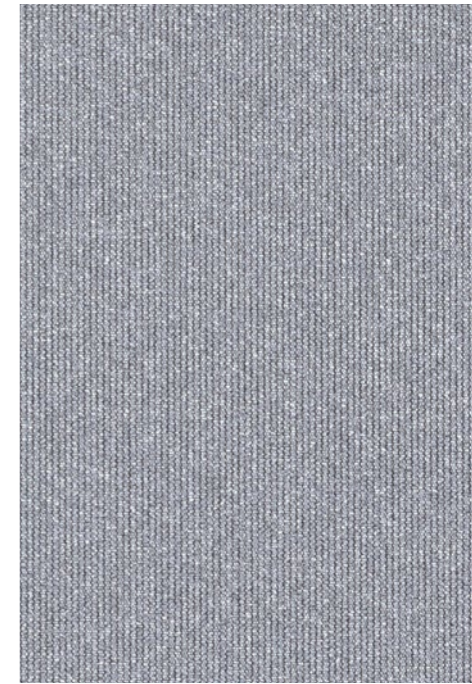
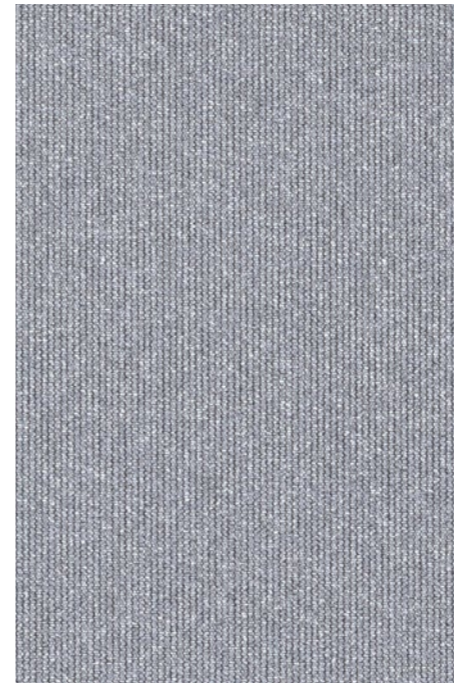




Nr. 122039000002101



202 SilverScreen 2% 205 SilverScreen 4%

Ultimate solar heat and light control

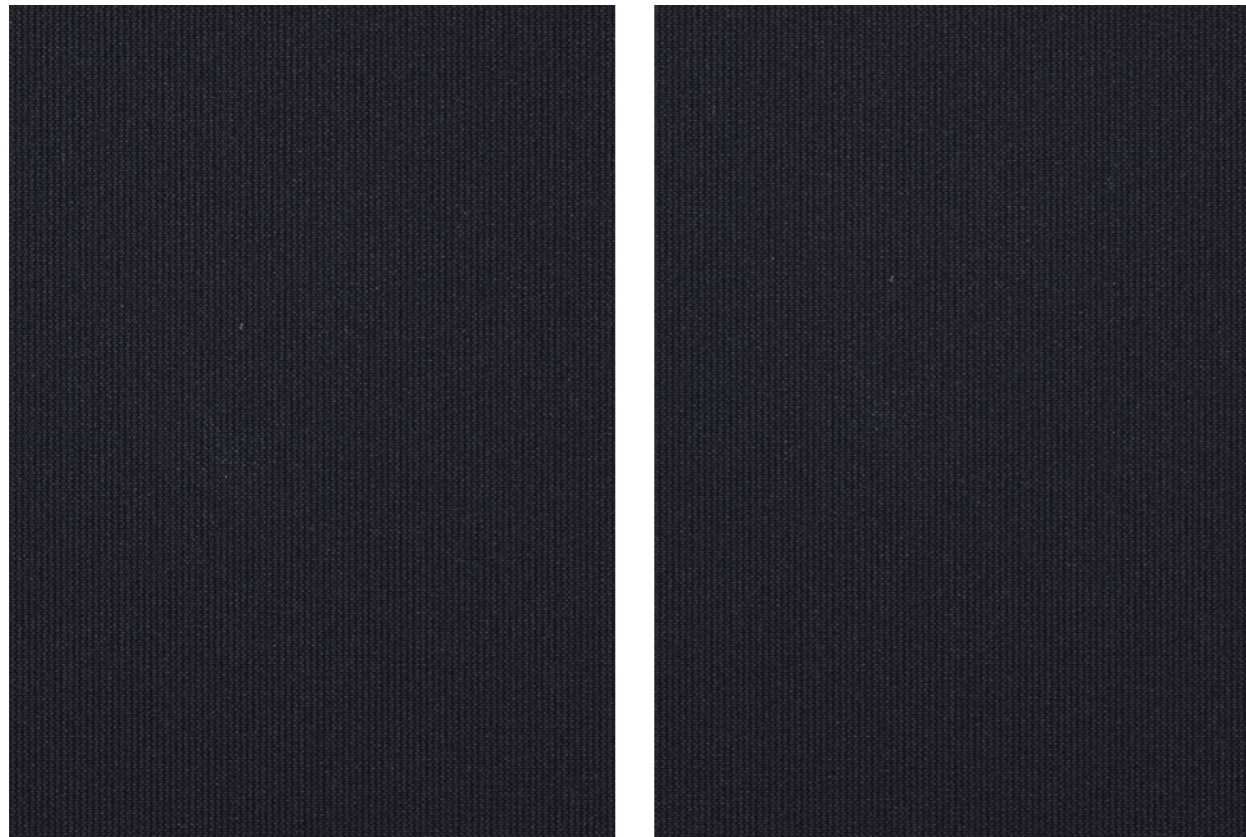
- World's best solar reflectance: up to 85%
- Excellent insulation properties
- Savings in heating and cooling
- Low total cost of ownership

Verosol



www.verosol.com

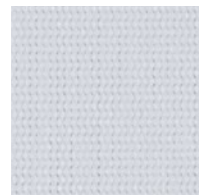
Transparencies



202 2% OF

205 4% OF

Customer favorites



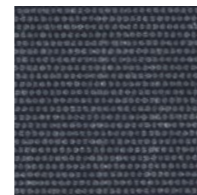
White
ED01 (031)
2% and 4%



Beige
ED02 (032)
2% and 4%



Light Grey
ED03 (033)
2% and 4%



Dark Grey
EB02 (012)
2% and 4%



Black
EB01 (011)
2% and 4%

Other colours



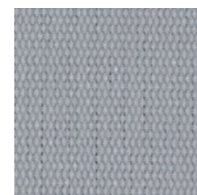
Dark Beige
ED04 (034)
2% and 4%



Bronze
EB03 (013)
2% and 4%



Chocolate Brown
EB04 (014)
4%



Misty Grey
EC01 (021)
4%



Steel Grey
EC02 (022)
2% and 4%

Specifications 202 SilverScreen 2% and 205 SilverScreen 4%

| | | |
|--|----------------------------|---|
| | Openness factor | 2% (202 SilverScreen 2%) 4% (205 SilverScreen 4%) |
| | Thickness (mm) | 0.46 (202 SilverScreen 2%) 0.49 (205 SilverScreen 4%) |
| | Weight (g/m ²) | 400 |
| | Width (cm) | 280 max. (202 SilverScreen 2%) 320 max. (205 SilverScreen 4%) |
| | Composition | 64% PVC / 36% Glass |
| | IR emissivity (metal side) | 0.03 (202 SilverScreen 2%) 0.13 (205 SilverScreen 4%) |
| | Flame retardant standards | EN 13501-1 C-s3,d0, BS 5867 part 2 type B, NFP 92503 M1, NFPA 701, AS/NZS 1530.3 (0-0-0-4) |
| | Environmental standards | Greenguard (LEED), Greenguard Gold, HPD2.1, RoHS2, REACH, Formaldehyde free |

| | 2% OF White | 2% OF Black | 4% OF White | 4% OF Black | |
|--|---|-----------------|-----------------|-----------------|----------------------|
| | Solar reflectance outside | 85% | 85% | 77% | 76% |
| | Light transmission | 3% | 2% | 5% | 5% |
| | Visual contact according to EN 14501:2021 | 2 | 2 | 2 | 2 |
| | View through rate according to ITA RWTH Aachen University | Good visibility | Good visibility | Good visibility | Excellent visibility |
| | Glare control rating according to EN 14501:2021 | 4* | 4* | 1 | 1 |

| | Solar control double glass (Glazing G EN14501:2021) | Glazing performance | 2% OF White / Black | 4% OF White / Black |
|--|---|---------------------|---------------------|---------------------|
| | Light Transmission LT value | 70% | 3% / 2% | 5% |
| | Solar heat gain g-value / SHGC | 33% | 8% | 11% / 12% |
| | Insulation U-value (W/m ² K) | 1.0 | 0.65 | 0.70 |

| | Solar control triple glass (Glazing I) | Glazing performance | 2% OF White / Black | 4% OF White / Black |
|--|---|---------------------|---------------------|---------------------|
| | Light Transmission LT value | 64% | 3% / 2% | 4% |
| | Solar heat gain g-value / SHGC | 31% | 10% | 13% |
| | Insulation U-value (W/m ² K) | 0.6 | 0.45 | 0.48 |

Optical properties are measured according to EN 14500, ISO 9050, ASTM C1371 & EN 410. For more information about technical data, energy savings and worldwide distribution, refer to www.verosol.com. Disclaimer: The technical data is based on average data and is subject to production tolerances. *Cut off angle ≈65°, so upgrade with 1 class according to EN14501:2021. Subject to misprints, errors and technical modifications. All technical details per colour available upon request.

The colours shown may vary from the supplied fabric due to batch variation in the production process. Please visit www.verosol.com to order samples of your choice.

