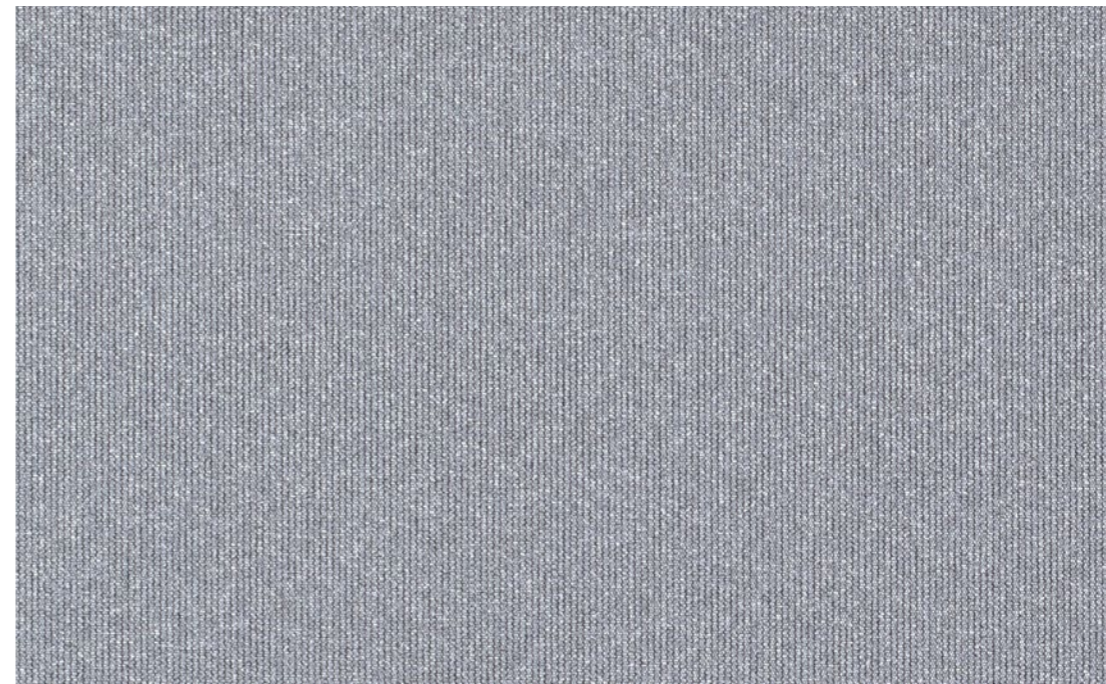




Nr. 1220399000000209



## 203 SilverScreen 3%

Outstanding view and performance

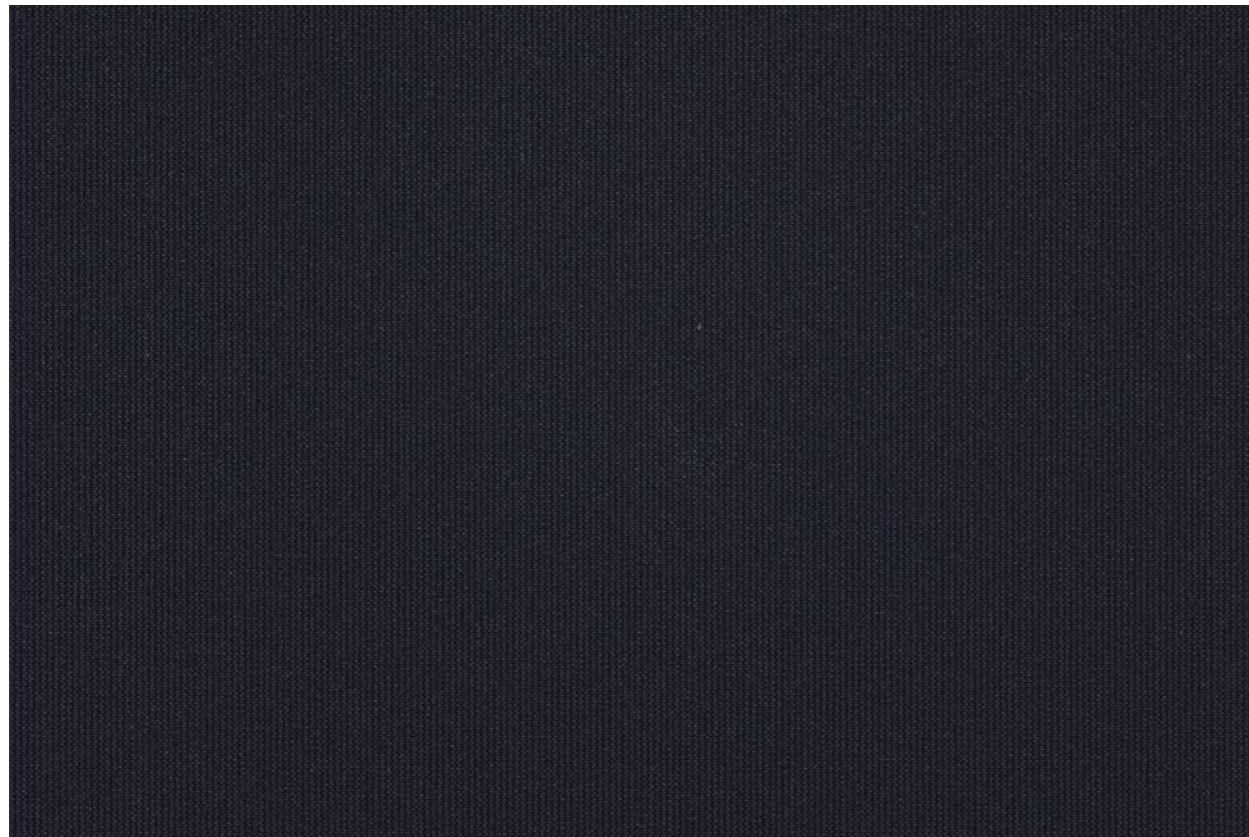
- 82% solar reflectance
- Savings in heating and cooling
- Clear view through and robust look and feel
- Phthalate free screens
- Flame retardant: B-s2, d0 (EN 13501-1)

**Verosol**



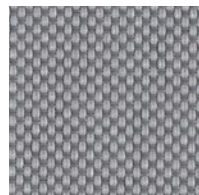
[www.verosol.com](http://www.verosol.com)

# Transparency

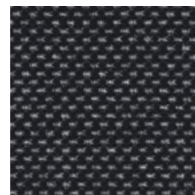


203  3% OF

## 7 colours



**Steel Grey**  
FC02 (022)



**Black**  
FB01 (011)



**Dark Grey**  
FB02 (012)



**Light Grey**  
FD03 (033)



**White**  
FD01 (031)



**Brown**  
FB03 (013)



**Beige**  
FD02 (032)

# Specifications 203 SilverScreen 3%

	Openness factor	3%
	Thickness (mm)	0.58
	Weight (g/m <sup>2</sup> )	450
	Width (cm)	280 max.
	Composition	75% PVC / 25% PET
	IR emissivity (metal side)	0.05
	Flame retardant standards	EN 13501-1 B-s2,d0, BS 5867 part 2 type B, DIN4102 B1, NFP 92503 M2, NFPA 701
	Environmental standards	OEKO-TEX Standard 100 Class IV, HPD2.1, RoHS2, REACH, Greenguard (LEED), Greenguard Gold, Formaldehyde free, Phthalate free

	White	Black	
	Solar reflectance outside	82%	82%
	Light transmission	4%	3%
	Visual contact according to EN 14501:2021	2	2
	View through rate according to ITA RWTH Aachen University	Good visibility	Excellent visibility
	Glare control rating according to EN 14501:2021	4*	4*

	Solar control double glass (Glazing G EN14501:2021)	Glazing performance	White	Black
	Light Transmission LT value	70%	3%	3%
	Solar heat gain g-value / SHGC	33%	10%	10%
	Insulation U-value (W/m <sup>2</sup> K)	1.0	0.66	0.66

	Solar control triple glass (Glazing I)	Glazing performance	White	Black
	Light Transmission LT value	64%	3%	3%
	Solar heat gain g-value / SHGC	31%	11%	11%
	Insulation U-value (W/m <sup>2</sup> K)	0.6	0.46	0.46

Optical properties are measured according to EN 14500, ISO 9050, ASTM C1371 & EN 410. For more information about technical data, energy savings and worldwide distribution, refer to [www.verosol.com](http://www.verosol.com). Disclaimer: The technical data is based on average data and is subject to production tolerances. \*Cut off angle  $\approx 65^\circ$ , so upgrade with 1 class according to EN14501:2021. Subject to misprints, errors and technical modifications. All technical details per colour available upon request.

The colours shown may vary from the supplied fabric due to batch variation in the production process. Please visit [www.verosol.com](http://www.verosol.com) to order samples of your choice.