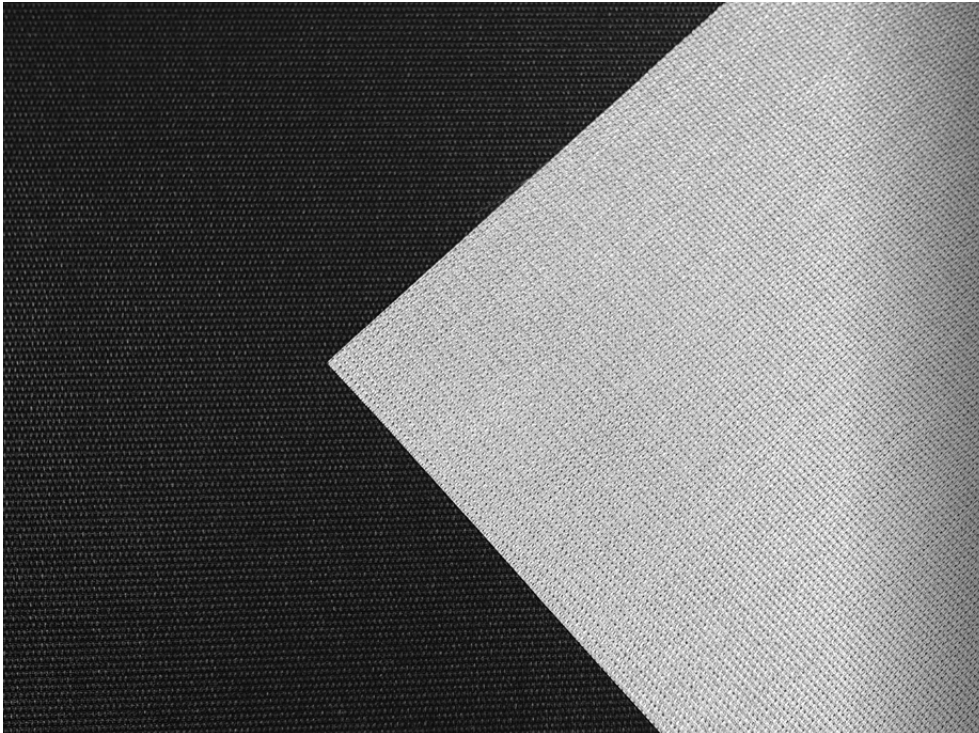


## 205 SilverScreen 4%

Semi-transparant gemetalliseerd textiel

### Productinformatie



Rolgordijnen



Paneelgordijnen



Lamellen



Vlamvertragend




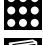




### Warm in de winter, koel in de zomer








#### Top presterende binnenzonwering

- De ideale oplossing voor installateurs vanwege het verlagen van de koel- en warmtelasten in een gebouw
- Hoge reflectiewaarden van 77%, voor uitstekende warmte-en lichtwering
- Behoud van helder doorzicht in combinatie met 4% openheidsfactor
- Lagere TCO; door besparingen op o.a. energielasten, installatiekosten en onderhoud
- Afhankelijk van het gekozen systeem, beschikbaar in een breedte tot 3,2 meter
- Vlamvertragend




# 205 SilverScreen 4%




## Specificatie details textiel

	Samenstelling	PVC 64% / Glass 36%
	Gewicht	400 g/m <sup>2</sup>
	Dikte	0.49 mm
	Openheidsfactor	4%
	IR emissiviteit buitenzijde	0.16
	Lichtechtheid	ISO105-B02; interieur: 7-8 (m.u.v. kleur ED01); exterieur: 8
	Vlamvertragend	EN13501 C-s3,d0, BS 5867 deel 2 type B, NFP 92503 M1, NFPA 701, AS/NZS 1530.3 (0-0-0-4)
	Milieu	GreenGuard (LEED), GreenGuard Gold, HPD2.1, RoHS2, REACH Formaldehyde vrij

Textiel kleurcode	ED01	EB01
 Transmissie zonnestraling	6%	4%
 Reflectie zonnestraling buitenzijde	77%	76%
 Licht transmissie	6%	4%
 UV transmissie	5%	4%
 Kleurweergave index	100	99
 Visueel contact met buiten volgens EN 14501	2	2
 Beheersing van verblinding volgens EN 14501 (BREEAM HEA3)	3	3

## Specificatie details textiel en beglazing

Zonwerend dubbelglas/ ZHR++ (Ref. beglazing D EN14501)	Prestatie beglazing	ED01	EB01
 LT-waarde (Licht Transmissie)	60%	4%	3%
 g-waarde / ZTA-waarde	32%	14%	14%
 U-waarde (W/m <sup>2</sup> K)	1.1	0.7	0.7

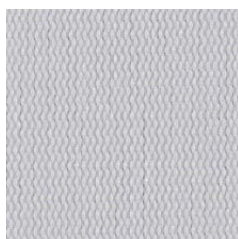
Isolerend dubbelglas/ HR++ (Ref. beglazing CEN14501)	Prestatie beglazing	ED01	EB01
 LT-waarde (Licht Transmissie)	79%	5%	4%
 g-waarde / ZTA-waarde	59%	25%	25%
 U-waarde (W/m <sup>2</sup> K)	1.2	0.7	0.7

\* Optische waarden gemeten volgens EN 14500, ISO 9050, ASTM C1371 & EN 4010. Voor meer informatie over de technische data, energiebesparingen en distributie, ga naar [www.verosol.nl](http://www.verosol.nl). Technische details per kleur zijn tevens op aanvraag beschikbaar. Disclaimer: de technische data is gebaseerd op gemiddelden en is onderhevig aan productietoleranties.

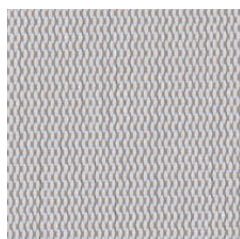
## Kleurcollectie



ED01 White



ED02 Beige



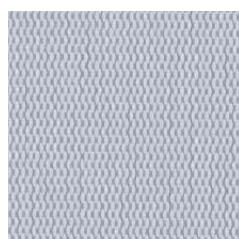
ED04 Dark Beige



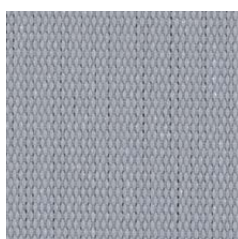
EB03 Bronze



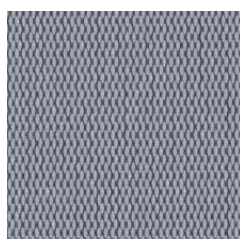
EB04 Chocolate Brown



ED03 Light Grey



EC01 Misty Grey



EC02 Steel Grey



EB02 Dark Grey



EB01 Black



De weergegeven kleuren kunnen verschillen van de werkelijke kleuren i.v.m productietoleranties. Raadpleeg [www.verosol.nl](http://www.verosol.nl) en vraag een kleurstaal aan.