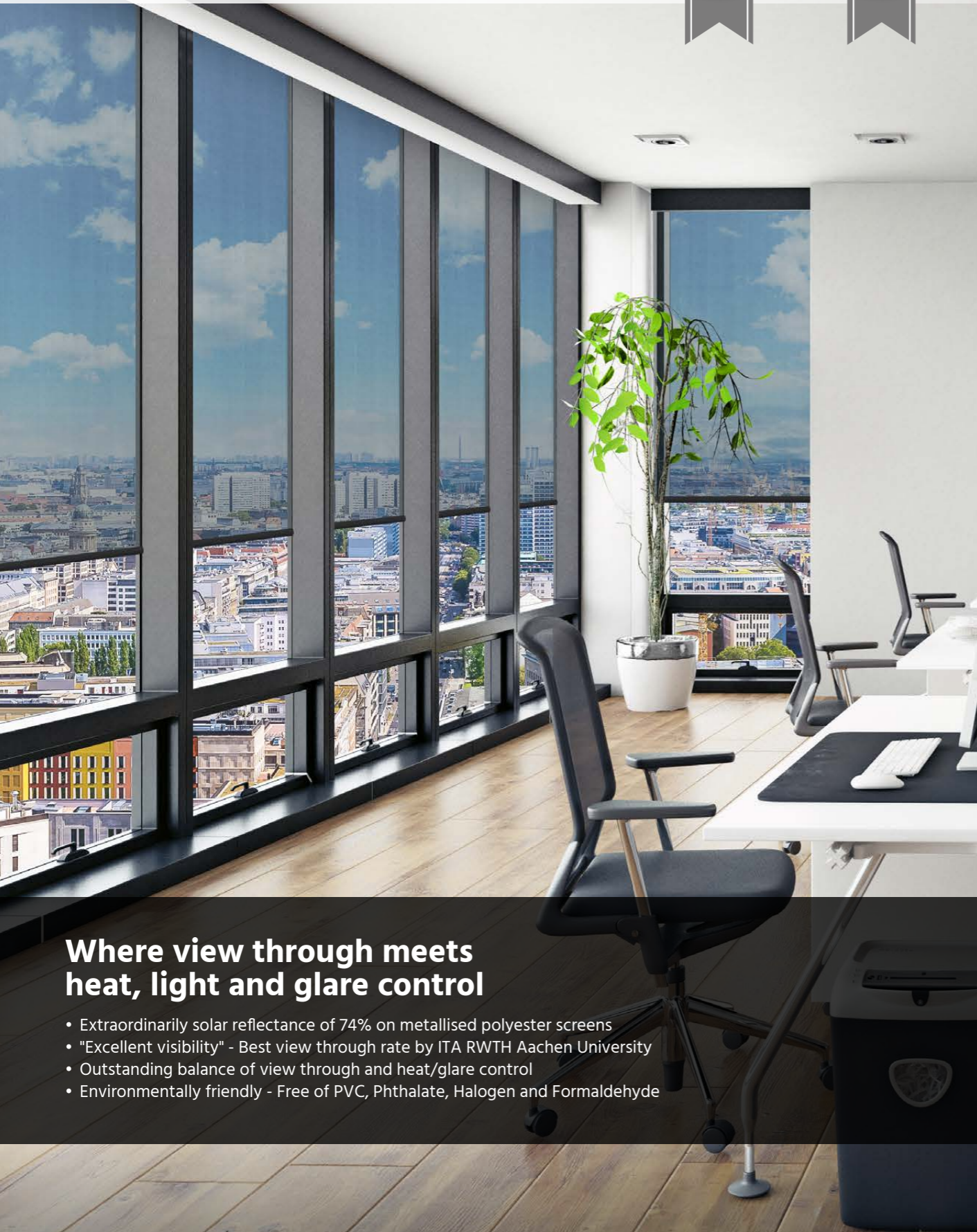


ClearView

Breakthrough in View Through

WORLD'S
BEST
REFLECTION
74%

BEST
VIEW
THROUGH

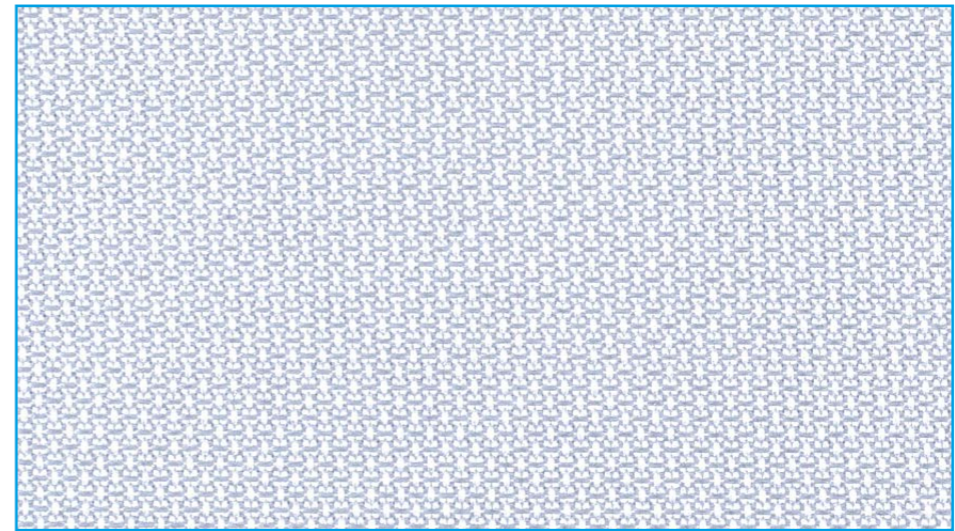


Where view through meets heat, light and glare control

- Extraordinarily solar reflectance of 74% on metallised polyester screens
- "Excellent visibility" - Best view through rate by ITA RWTH Aachen University
- Outstanding balance of view through and heat/glare control
- Environmentally friendly - Free of PVC, Phthalate, Halogen and Formaldehyde

Verosol

Nr. 12209900002008



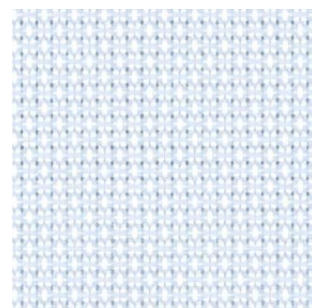
Verosol

Transparency



833 3% OF

Customers favourites



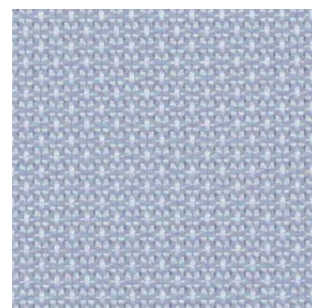
White 000



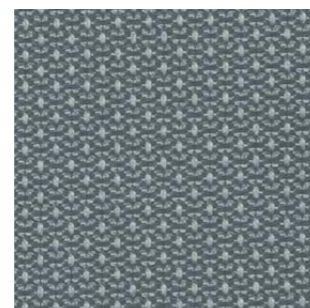
Sand Beige 741



Dark Beige 765



Steel Grey 936



Dark Grey 998



Black 829

The colours shown may vary from the supplied fabric due to batch variation in the printing process. Please visit www.verosol.com to order samples of your choice.

Specifications ClearView

Composition	Polyester	
Weight (g/m²)	210	
Thickness (mm)	0.41	
Width (cm)	240 and soon to be +/- 275	
Openness factor (OF)	3%	
IR emissivity (metal side)	0.21	
Flame retardant standards	EN 13501-1 B-s1, d0, DIN 4102 B1, BS 5867 Part 2 Type B, NFPA 701	
Environmental standards	OEKO-TEX Standard 100 Class IV, GreenGuard (LEED), GreenGuard Gold, HPD 2.1, RoHS2, REACH, PVC free, Formaldehyde free, Halogen free, Phthalate free, Antimicrobials free	

	White 000	Black 829
Solar reflection outside	74%	74%
Light transmission	4%	3%
Glare rating according to EN 14501	3	3
Visual contact according to EN 14501	2	2
View through rate according to ITA RWTH Aachen University*	Excellent visibility	Excellent visibility

	Glazing performance	White 000	Black 829	Performance improvement (max.)
Solar control double glass (glazing D EN 14501)				
Light transmission LT-Value	60%	3%	2%	97%
Solar heat gain g-value / SHGC	32%	15%	15%	53%
Insulation U-value (W/m²K)	1.1	0.8	0.8	27%

Optical properties are measured according to EN 14500, ISO 9050, ASTM C1371 & EN 410. For more information about technical data, energy savings and worldwide distribution, refer to www.verosol.com. Disclaimer: The technical data is based on average data and is subject to production tolerances. All technical details per colour available upon request. Subject to misprints, errors and technical modifications.

* Independent research by ITA RWTH Aachen University. All colours score the highest rate: Excellent visibility. The highly sophisticated and precise composition of the textile, in combination with a relatively low openness factor, offers an excellent balance of view through and glare control.

